



PUBLICATION NO.
PI6013





Beef + Lamb New Zealand
Economic Service
PO Box 121, Wellington 6140
E-mail: econ@beeflambnz.com
Phone: +64 (4) 473 9150
Website: www.beeflambnz.com

ISSN 2230-5769 print version
ISSN 2230-5777 online version

KEY
FOB = Free on Board **p** = Provisional
SW = Shipped Weight **e** = Estimate
\$ = New Zealand dollar **NA** = Not available

ACKNOWLEDGEMENTS

This booklet brings together in summary form a selection of information which is available from the recognised sources noted below and to whom thanks are due.

New Zealand Meat Board, Poultry Industry Association of New Zealand, Deer Industry New Zealand, Livestock Improvement Corporation Ltd, DairyNZ, Ministry for Primary Industries, NIWA, New Zealand Pork Industry Board, Statistics New Zealand, New Zealand Wool Services International Ltd.

This booklet has been printed on Cocoon Offset paper which has been manufactured using a totally chlorine free process, 100% post consumer waste and is certified FSC Recycled.



CONTENTS

PAGE

	OVERVIEW	2
	FARMING	4
	LIVESTOCK OVERVIEW	5
	SHEEP	7
	BEEF CATTLE	8
	DAIRY CATTLE	8
	DEER	9
	GOATS	10
	PIGS	10
	MEAT	10
	WOOL	14
	DAIRY	17
	ARABLE	18
	FERTILISER	19
	REVENUE & EXPENDITURE	20
	AGRICULTURAL PRODUCTION & EXPORTS	21

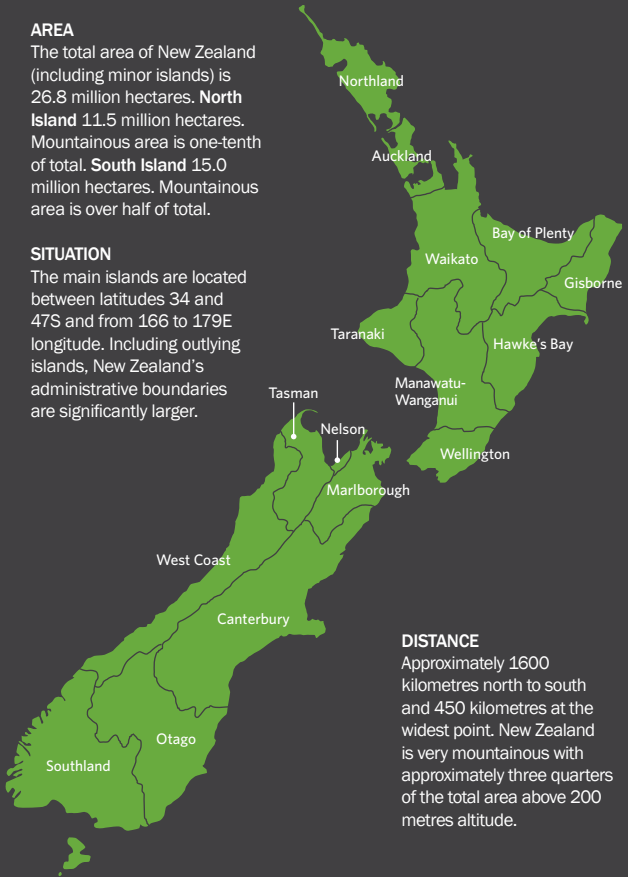
Geography

AREA

The total area of New Zealand (including minor islands) is 26.8 million hectares. **North Island** 11.5 million hectares. Mountainous area is one-tenth of total. **South Island** 15.0 million hectares. Mountainous area is over half of total.

SITUATION

The main islands are located between latitudes 34 and 47S and from 166 to 179E longitude. Including outlying islands, New Zealand's administrative boundaries are significantly larger.



DISTANCE

Approximately 1600 kilometres north to south and 450 kilometres at the widest point. New Zealand is very mountainous with approximately three quarters of the total area above 200 metres altitude.

Climate 2015

2015 was sunny for most of New Zealand, and drier than normal for some of the country.

Temperatures Annual temperature was near average across much of the country. However, above average temperature was recorded in isolated locations in Bay of Plenty and Queenstown Lakes district.

Rainfall Yearly rainfall in 2015 was below normal in Northland, Tasman, Nelson and Canterbury, as well as for parts of eastern Waikato, Bay of Plenty, Gisborne and Wellington. Rainfall was in the near normal range for the remainder of New Zealand.

Sunshine 2015 was a very sunny throughout the country. Above normal to well above normal sunshine was recorded for much of the South Island as well as northern and eastern parts of the North Island. Several locations observed their highest annual sunshine total on record.

Soil moisture Below normal soil moisture levels prevailed for the majority of the country through January and February. By the end of July, soil moisture levels had returned to near normal levels for much of the country with the exception of Hawke's Bay, Wairarapa and eastern parts of Canterbury and north Otago. Soil moisture levels around the country began to decrease again in October and as of 1 January 2016, soil moisture levels were below normal for the time of year for the entire country with the exception of the Auckland region and Coromandel where levels were near normal.

Annual rainfall by district (mm)*

NORTH ISLAND		SOUTH ISLAND	
Kaitia	1,351	Nelson	960
Whangarei	1,304	Blenheim	711
Auckland	1,212	Westport	2,121
Tauranga	1,181	Kaikoura	710
Hamilton	1,108	Hokitika	2,901
Rotorua	1,342	Christchurch	618
Gisborne	996	Mt Cook	4,485
Taupo	960	Lake Tekapo	592
New Plymouth	1,386	Timaru	548
Napier	785	Milford Sound	6,715
Wanganui	918	Queenstown	749
Palmerston North	917	Alexandra	359
Masterton	928	Manapouri	1,129
Wellington	1,207	Dunedin	738
		Invercargill	1,149
		Chatham Islands	911

* 30-year average, 1981 - 2010

Source: NIWA

Population

New Zealand's total population is estimated at 4,595,700 at 30 June 2015, an increase of 1.9% over the previous 12 months. In 2014, 14% of the population lived in rural areas and 86% lived in urban areas.



MAIN URBAN AREAS		SECONDARY URBAN AREAS	
Whangarei	54,400	Pukekohe	28,400
Auckland	1,413,500	Tokoroa	13,550
Hamilton	218,800	Taupo	23,400
Tauranga	127,800	Whakatane	19,000
Rotorua	56,200	Hawera	11,600
Gisborne	35,400	Feilding	15,700
Napier / Hastings	128,800	Levin	20,300
New Plymouth	55,600	Masterton	20,800
Wanganui	39,200	Blenheim	30,200
Palmerston North	82,400	Greymouth	9,860
Kapiti	41,000	Ashburton	19,500
Wellington	393,500	Timaru	28,400
Nelson	64,100	Oamaru	13,600
Christchurch	375,200	Gore	9,860
Dunedin	116,200		
Invercargill	49,800		

Source: Statistics New Zealand

FARMING



Area of farming land 2014

- 14.1 million hectares, of which:
 - 7.9 in grassland
 - 2.6 in tussock or danthonia
 - 1.6 in plantations
 - 2.0 in other land or holdings

Farm holdings 2014

In 2014 there were 56,610 holdings, irrespective of size or location, with an average area of 250 hectares.

Source: Statistics New Zealand, 2014 Agricultural Production Survey

Types of farms 2012

44%	mainly sheep & beef farming	5%	crop farming
21%	mainly dairy farming	15%	horticulture & orchards
6%	mixed livestock	9%	other

Source: Statistics New Zealand, 2012 Agricultural Census

Farms by farm type 2012

	NUMBER OF FARMS ¹	AGRICULTURAL AREA (000 HA)
Dairying	12,150	2,415
Sheep & Beef Farming	25,113	9,328
Cropping	3,297	284
Deer Farming	1,128	287
Pig Farming	225	11
Poultry	135	3
Total	42,048	12,327
Other (including forestry)	16,020	2,067
TOTAL ALL FARM TYPES	58,068	14,394

1 Includes non-commercial smallholding farms.

Source: Statistics New Zealand, 2012 Agricultural Census

LIVESTOCK OVERVIEW



Livestock numbers at 30 June (million)

	2005	2015p	% CHANGE
Sheep	39.88	29.48	-26%
Beef Cattle	4.42	3.58	-19%
Dairy Cattle	5.09	6.37	+25%
Deer	1.71	0.91	-47%
Total Stock Units¹	93.27	85.77	-8%

1 Includes goats.

Source: Beef + Lamb New Zealand Economic Service, Statistics New Zealand

Total stock units at 30 June 2015 decreased an estimated 8% compared with 2005. The reduction is largely due to the decline in sheep numbers.

While the stock unit is a broad measure of pasture demand, it could be argued that the stock units in 2015 were better fed and more productive than in 2005.

Livestock productivity

	2004-05	2014-15p
Ewe Lambing Percentage	119%	127%
Average Lamb Wt (kg)	17.5	18.1
Lamb (kg/ewe)	16.4	19.5
Wool (kg/head)	5.5	5.2
Average Steer Wt (kg)	318	302
Milk solids (kg/cow)	308	377

Source: Beef + Lamb New Zealand Economic Service, Livestock Improvement Corporation Ltd, DairyNZ

Livestock by production region at 30 June 2014 (000)

	TOTAL SHEEP	TOTAL BEEF	TOTAL DAIRY	TOTAL DEER
Nth/Sth Auckland	3,647	1,157	2,742	132
East Coast	7,418	988	331	88
Taranaki/Manawatu	3,297	460	906	70
NORTH ISLAND	14,362	2,604	3,979	290
Canterbury/Westland	6,429	655	1,748	317
Otago	4,713	237	271	129
Southland	4,299	174	700	223
SOUTH ISLAND	15,441	1,065	2,719	668
NEW ZEALAND	29,803	3,670	6,698	958

Totals may not add due to rounding.

Source: Beef + Lamb New Zealand Economic Service, Statistics New Zealand

Livestock by production region at 30 June 2014 (%)

	TOTAL SHEEP	TOTAL BEEF	TOTAL DAIRY	TOTAL DEER
Nth/Sth Auckland	12%	32%	41%	14%
East Coast	25%	27%	5%	9%
Taranaki/Manawatu	11%	13%	14%	7%
NORTH ISLAND	48%	71%	59%	30%
Canterbury/Westland	22%	18%	26%	33%
Otago	16%	6%	4%	13%
Southland	14%	5%	10%	23%
SOUTH ISLAND	52%	29%	41%	70%
NEW ZEALAND	100%	100%	100%	100%

Source: Beef + Lamb New Zealand Economic Service, Statistics New Zealand

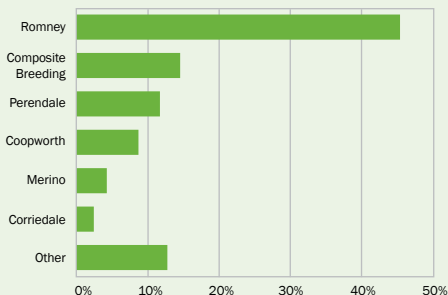
SHEEP



Sheep numbers at 30 June 2015p

19.2	million breeding ewes
10.3	million ewe hoggets, dry ewes, wethers and rams
29.5	million sheep wintered
-26.1	% on 2005
-1.1	% on 2014

Sheep breeds 2013-14



Source: Beef + Lamb New Zealand Economic Service, Sheep & Beef Farm Survey

Breeding flocks

The major breed in the North Island and southern districts of the South Island is the Romney. Corriedale and Halfbred sheep are mainly found in Canterbury, Marlborough and parts of Otago. Merino sheep are predominantly farmed in the South Island high country.

BEEF CATTLE



Beef cattle at 30 June 2015p

Beef cattle numbers were provisionally 3.6 million, of which 1.0 million were beef breeding cows and heifers. 72% of total beef cattle were in the North Island.

Beef cattle breeds 2013-14

Angus	36%	Friesian	14%
Angus Hereford	10%	Friesian Hereford	4%
Hereford	9%	Mixed	21%
Other	6%		

Few farmers devote themselves exclusively to beef production. In general, the raising and finishing of beef cattle is carried out in conjunction with sheep farming. In addition, beef is produced from cull dairy cows, bobby calves and raising young bulls to produce bull beef.

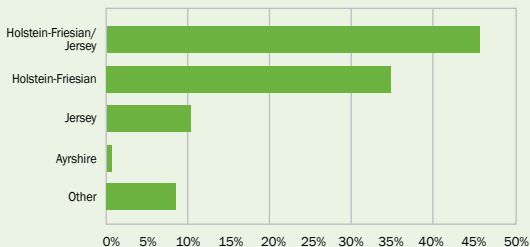
DAIRY CATTLE



Dairy cattle at 30 June 2015p

Dairy cattle, including cows, replacement heifers and breeding bulls, totalled 6.4 million at 30 June 2015.

Dairy cow breeds 2014-15



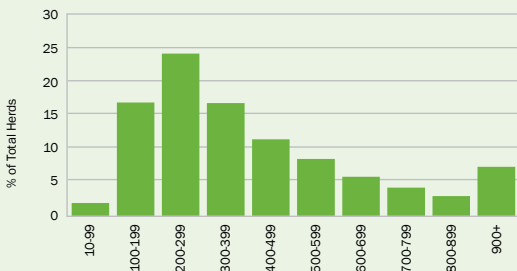
Source: Livestock Improvement Corporation Ltd, DairyNZ

59% of dairy cattle were in the North Island. The total herd of dairy cows and heifers in calf at 30 June 2015 was 5.0 million.

Herd size

Average herd size in 2004–05 315 cows
2014–15 419 cows (+33%)

Dairy herd size distribution 2014–15



Source: Livestock Improvement Corporation Ltd, DairyNZ

DEER



Farmed deer numbers at 30 June 2015p

Breeding hinds	432,300	Other deer	126,600
Weaners	348,800	Total deer	907,700

For the year ended September 2015, total deer industry exports were \$255 million FOB. Venison exports were worth \$174 million FOB, velvet export earnings totalled \$39 million FOB while co-products and other totalled \$28 million FOB. Deer hides and leather receipts were \$15 million FOB.

Venison exports totalled 14,869 tonnes, of which 31% went to Germany, 16% to Benelux and 16% went to the USA. In 2014-15, China remained the largest export destination for New Zealand velvet, accounting for 63% of export receipts although Korea remains the largest market for the consumption of New Zealand velvet.

Source: Deer Industry New Zealand

GOATS



A total of 97,370 farmed goats were recorded in 2014 by Statistics New Zealand. About 72% of goats were in the North Island, with the largest populations in Waikato. It is estimated that two thirds of goats were on commercial sheep and beef farms.

For the year ended September 2015, goat exports totalled \$7.8 million FOB (excludes goat dairy products). This comprised \$6.9 million FOB of goat meat, \$0.4 million FOB of goat fibre and \$0.4 million FOB of skins.

PIGS



Pig production in the year ended September 2015 was 625,890 pigs, a decrease of 7% compared to the year ended September 2014 (672,108 pigs).

Production decreased by 7% in the North Island and by 8% in the South Island. 61% of all pigs marketed were slaughtered in the South Island.

Most of the pig meat production is consumed in the local market. Total supply of pig meat in 2014-15 was 113,596 tonnes, of which 65,639 tonnes were imported.

MEAT



The total number of livestock processed for the year ended 30 September 2015 at export plants and abattoirs was:

21.3 million lambs	2.7 million cattle	0.6 million pigs
4.2 million sheep	2.1 million calves	0.4 million deer
		0.1 million goats

Total meat production on a bone-in-basis for the same period was:

	000 TONNES	% AVAILABLE FOR EXPORT ¹
Lamb	385.0	98%
Mutton	103.0	98%
Beef & Veal	695.0	91%
Pig meat	44.8	NA
Goat meat	1.3	72%
Venison	21.4	99%
Total	1,250.5	90%

1 Some was consumed in New Zealand.

Source: Beef + Lamb New Zealand Economic Service, Statistics New Zealand, Deer Industry New Zealand

Meat exports Year ended 30 September 2015

	TOTAL TONNES SW	\$ 000 FOB	\$ PER TONNE SW
Carcases	7,577	51,414	6,786
Cuts	247,206	1,966,772	7,956
Boneless	47,307	548,910	11,603
LAMB	302,090	2,567,096	8,498
Carcases	16,867	77,236	4,579
Cuts	54,403	250,101	4,597
Boneless	16,128	122,361	7,587
MUTTON	87,397	449,698	5,145
Carcases	41	360	8,716
Cuts	37,364	161,893	4,333
Boneless	370,010	2,884,769	7,796
BEEF	407,415	3,047,022	7,479
Carcases	856	2,905	3,394
Cuts	7,874	25,919	3,292
Boneless	15,708	108,713	6,921
BOBBY	24,438	137,538	5,628
GOAT	966	6,908	7,149
OFFALS	69,234	224,057	3,236
TOTAL	891,540	6,432,319	7,215

Source: Beef + Lamb New Zealand Economic Service, Statistics New Zealand

Meat exports by region Year ended 30 September 2015 (%)

% of total tonnes SW

	LAMB	MUTTON	BEEF & VEAL	OTHER ¹
Africa	1%	1%	0%	12%
European Union	41%	15%	2%	12%
Middle East	10%	2%	3%	14%
North America	10%	8%	58%	6%
North Asia	32%	64%	28%	29%
Pacific	2%	0%	2%	3%
South Asia	2%	8%	6%	13%
Other	2%	2%	1%	11%
Total	100%	100%	100%	100%

1 Other meat and offal, variety meats, goat meat.

Source: Beef + Lamb New Zealand Economic Service, Statistics New Zealand

Average export carcass weights kg per head

Year ended 30 September	2014	2015	% change
LAMB			
North Island	18.51	18.42	-0.5%
South Island	18.04	17.75	-1.6%
NEW ZEALAND	18.26	18.09	-0.9%
MUTTON			
North Island	24.89	24.67	-0.9%
South Island	25.70	25.40	-1.2%
NEW ZEALAND	25.33	25.04	-1.1%
STEER AND HEIFER			
North Island	275.45	271.45	-1.5%
South Island	276.70	271.76	-1.8%
NEW ZEALAND	275.81	271.54	-1.5%
COW			
North Island	197.58	195.62	-1.0%
South Island	203.16	199.87	-1.6%
NEW ZEALAND	199.40	197.04	-1.2%
BULL			
North Island	301.00	297.71	-1.1%
South Island	301.83	298.13	-1.2%
NEW ZEALAND	301.17	297.79	-1.1%

Source: Beef + Lamb New Zealand Economic Service, New Zealand Meat Board

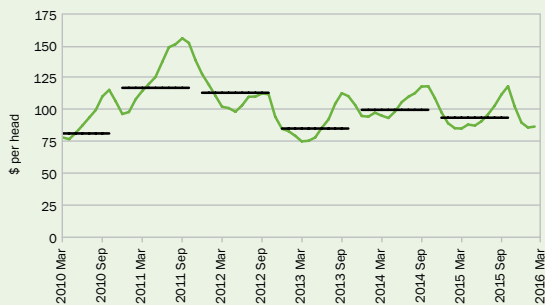
Average export payment to farmers \$ per head

Year ended 30 September	LAMB ¹	MUTTON ¹	BEEF
2005	68.25	47.15	787.93
2006	56.21	40.44	782.38
2007	53.89	36.30	776.20
2008	58.55	34.08	809.56
2009	89.83	50.01	818.68
2010	81.30	56.43	810.88
2011	117.64	91.76	970.89
2012	113.58	94.57	1,016.46
2013	85.30	60.79	933.43
2014	100.04	76.43	909.11
2015	93.92	66.80	1,144.16

1 Per head returns including skin and wool pull payments net of processing charges.

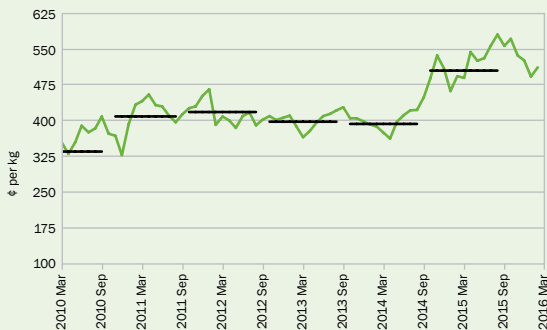
Source: Beef + Lamb New Zealand Economic Service

All grades lamb month and annual average



Source: Beef + Lamb New Zealand Economic Service

M bull month and annual average



Source: Beef + Lamb New Zealand Economic Service

New Zealand meat consumption

Year ended September 2009

	KG PER CAPITA	%
Lamb	7.5	8%
Mutton	2.8	4%
Beef and Veal	28.0	31%
Poultry	31.3	35%
Pig meat	19.6	22%
TOTAL	89.2	100%

Source: Beef + Lamb New Zealand Economic Service, Poultry Industry Association of New Zealand, New Zealand Pork Industry

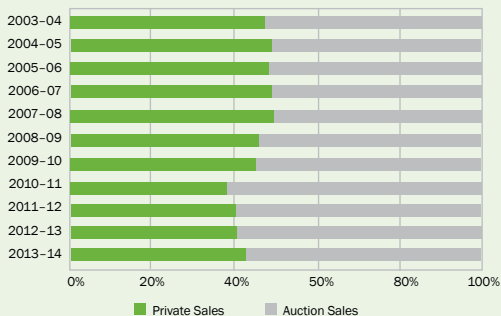
WOOL



In 2015, New Zealand was the third largest producer of wool on a “clean” basis in the world and produced 10.1% of world production.

The main shear generally takes place from November to January and sheep are machine shorn on approximately 43,000 stands. Merino sheep are sometimes blade shorn in cooler regions.

Farm-gate wool sales



Source: Beef + Lamb New Zealand Economic Service, Sheep & Beef Farm Survey

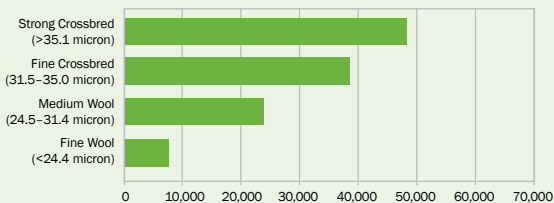
Sheep numbers, wool production and auction price

YEAR	OPENING SHEEP 000	WOOL - 000 TONNES GREASY	WOOL - NZ CENTS PER KG GREASY
1980-81	68,772	380.7	247.5
1990-91	57,852	305.3	316.4
2000-01	42,260	236.7	392.2
2001-02	40,033	228.9	385.3
2002-03	39,572	229.6	414.0
2003-04	39,552	217.7	353.3
2004-05	39,271	215.5	326.3
2005-06	39,880	224.5	298.6
2006-07	40,098	217.6	309.6
2007-08	38,460	205.8	313.7
2008-09	34,088	157.5	308.7
2009-10	32,384	185.8	313.5
2010-11	32,563	172.7	469.9
2011-12	31,132	164.9	498.1
2012-13	31,263	169.9	384.5
2013-14	30,787	158.2	430.8
2014-15	29,803	154.5	442.9

Source: Beef + Lamb New Zealand Economic Service, Statistics New Zealand



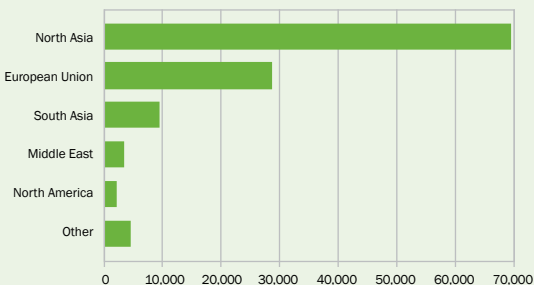
Wool exports Year ended June 2015 (Tonnes clean)



Source: Beef + Lamb New Zealand Economic Service, Statistics New Zealand

Wool fibre export earnings for the year ended 30 June 2015 were \$804.9 million FOB. Wool carpet and rug export receipts were \$115.5 million FOB, with intermediate products (tops, yarns and sliver) and other final woollen products contributing a further \$37.9 million FOB. All wool products represented 2.1% (\$958.5 million FOB) of the total value of New Zealand merchandise exports.

Wool exports Year ended June 2015 (Tonnes clean)



Source: Beef + Lamb New Zealand Economic Service, Statistics New Zealand



Dairy companies

There are three co-operative New Zealand dairy companies: Fonterra, Tatua and Westland. In addition, there are five other dairy companies exporting dairy products: Open Country, Synlait, Miraka, Goodman Fielder and Oceania Dairy. The largest of these companies is Fonterra which is owned by over 10,500 dairy farmers, processing around 22 billion litres of milk. Fonterra is the largest producer of dairy products in New Zealand.

Dairy production 2014-15

In 2014-15, production per cow was 377 kg milk solids or 4,235 litres of milk (comprising 213 kg milk fat and 164 kg protein content).

Dairy meat

In the year ended 30 September 2015, 2.12 million bobby calves and 1.19 million cull cows were processed. In spring 2014, an estimated 0.49 million calves were retained for dairy beef production.

Exports of dairy produce Year ended September 2015

	000 TONNES	%
Milk powder	1,822	29%
Milk solids	1,623	26%
Whole milk	1,384	22%
Butter	485	8%
Skim milk	401	6%
Cheese	310	5%
Casein	102	2%
Whey	86	1%

Source: Statistics New Zealand



Arable farming in New Zealand is located mainly on the plains and easier downland country in the South Island. The greater portion of the area sown is in Canterbury.

Cash crops

In the year ended June 2015, wheat was harvested from 48,600 hectares, barley from 67,200 hectares, maize from 19,500 hectares and oats from 6,400 hectares. Associated yields for wheat, barley, maize and oats were 8.7, 6.7, 11.5 and 5.3 tonnes per hectare respectively.

Grain and seed crop production

Year ended 30 June 2012

	NORTH ISLAND	SOUTH ISLAND	NEW ZEALAND
WHEAT			
Tonnes	15,500	473,100	488,600
Hectares	2,600	52,200	54,800
Tonnes/ha	6.0	9.1	8.9
BARLEY			
Tonnes	48,800	390,000	438,800
Hectares	9,200	56,500	65,700
Tonnes/ha	5.3	6.9	6.7
MAIZE			
Tonnes	205,800	5,400	211,200
Hectares	18,900	500	19,400
Tonnes/ha	10.9	10.8	10.9
OATS			
Tonnes	600	17,500	18,100
Hectares	200	3,700	3,900
Tonnes/ha	3.0	4.7	4.6

Totals may not add due to rounding.

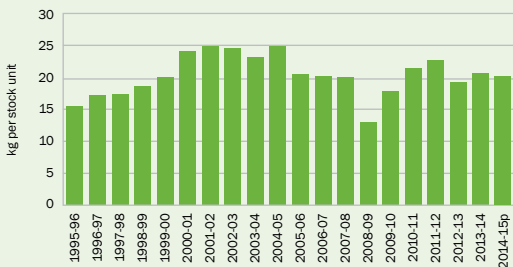
Source: Statistics New Zealand, 2012 Agricultural Census



Fertiliser sales

Most New Zealand soils need fertilisers, especially phosphate and sulphur, and topdressing of pastures is essential for their maintenance and productivity. Peak deliveries each year are made in October and again in February to April, when spring and autumn topdressing take place.

Sheep and beef farm fertiliser use



Source: Beef + Lamb New Zealand Economic Service, Sheep & Beef Farm Survey, All Classes Sheep and Beef Farm

Fertiliser usage varies considerably between regions due to differences in soil type, climate and type of farming. There is a strong link between stock performance and fertiliser use.

Sheep and beef farm fertiliser use 2014-15p

	KG PER STOCK UNIT	KG PER HECTARE
Northland/Waikato/BOP	24.1	227.2
East Coast	18.7	163.0
Taranaki/Manawatu	21.7	198.4
NORTH ISLAND	21.6	196.1
Marlborough/Canterbury	19.8	100.0
Otago/Southland	18.2	93.5
SOUTH ISLAND	19.3	97.3
NEW ZEALAND	20.5	136.3

Source: Beef + Lamb New Zealand Economic Service, Sheep & Beef Farm Survey, All Classes Sheep and Beef Farm



Sheep and beef farm revenue, expenditure and profit

\$ per Farm¹

SUMMARY		2004-05	2013-14	2014-15p
1	REVENUE			
2	Wool	44,713	49,029	50,200
3	Sheep	164,908	215,359	202,900
4	Cattle	74,439	104,267	117,900
5	Dairy Grazing	4,569	29,316	30,400
6	Deer + Velvet	3,390	4,113	4,000
7	Goat + Fibre	22	38	0
8	Cash Crop	25,010	62,521	57,700
9	Other	12,590	18,212	16,100
10	TOTAL GROSS REVENUE	329,641	482,855	479,200
11	EXPENDITURE			
12	Fert, Lime & Seeds	41,286	61,522	59,900
13	Repairs & Maintenance	23,383	30,175	28,700
14	Other Working Expenses	111,015	159,224	166,800
15	TOTAL WORKING EXPENSES	175,684	250,921	255,400
16	Interest & Rent	41,093	64,611	66,400
17	Other Standing Charges	15,759	25,214	25,800
18	Depreciation	23,840	27,384	26,900
19	TOTAL EXPENDITURE	256,376	368,130	374,500
20	FARM PROFIT BEFORE TAX²	73,265	114,725	104,700

1 The Weighted Average All Classes Sheep and Beef Farm at 1 July 2014 carried 2,770 sheep, 348 beef cattle and 30 deer totalling 4,207 stock units.

2 Farm Profit Before Tax is required to meet personal drawings, taxation payments, debt repayments and the purchase of capital items.

Source: Beef + Lamb New Zealand Economic Service, Sheep & Beef Farm Survey, All Classes Sheep and Beef Farm

Revenue sources

Revenue	2004-05	2013-14	2014-15p
Wool	14%	10%	10%
Sheep	50%	45%	42%
Cattle	23%	22%	25%
Dairy Grazing	1%	6%	6%
Deer + Velvet	1%	1%	1%
Cash Crop	8%	13%	12%
Other	4%	4%	3%

Source: Beef + Lamb New Zealand Economic Service, Sheep & Beef Farm Survey, All Classes Sheep and Beef Farm

AGRICULTURAL PRODUCTION & EXPORTS



Value and volume of agricultural production and exports

YEAR	TOTAL AGRICULTURAL EXPORTS (\$m FOB)	TOTAL PASTORAL EXPORTS (\$m FOB)	WOOL PRODUCTION (000 TONNES CLEAN)	MILK SOLIDS PROCESSED (000 TONNES)	MEAT PRODUCTION (000 TONNES BONE-IN)
NOTE	1	1	1	2	3,4
2004-05	15,450	11,697	161.1	1,213	1,195
2005-06	16,371	12,408	167.6	1,267	1,185
2006-07	17,781	13,370	162.5	1,316	1,196
2007-08	20,521	15,874	152.9	1,270	1,233
2008-09	22,271	17,114	117.0	1,393	1,138
2009-10	20,906	16,022	138.0	1,438	1,106
2010-11	24,398	19,294	128.0	1,513	1,088
2011-12	25,050	19,691	122.2	1,685	1,051
2012-13	24,964	19,439	125.9	1,658	1,117
2013-14	30,180	24,444	117.1	1,825	1,119
2014-15	28,007	21,739	114.4	1,890	1,183

1 Year Ended June. 2 Year Ended May. 3 Year Ended September. 4 Inspected meat production at export meat works and abattoirs – lamb, mutton, beef and veal.

Source: Beef + Lamb New Zealand Economic Service, Ministry for Primary Industries, Statistics New Zealand, Livestock Improvement Corporation Ltd

Value of New Zealand exports

Year ended 30 June (\$ million FOB)

	2011	2012	2013	2014	2015	% Change
PASTORAL PRODUCTS						
WOOL						
Raw Wool	716.9	776.3	678.3	733.2	805.0	9.8%
MEAT						
Lamb	2,436.4	2,309.9	2,263.2	2,485.4	2,504.2	0.8%
Mutton	473.9	329.4	395.0	488.4	417.6	-14.5%
Beef & Veal	2,035.8	2,009.5	2,142.8	2,199.4	2,979.9	35.5%
Venison	215.0	205.3	171.2	186.8	174.0	-6.8%
Edible Offal	197.7	211.2	208.7	216.7	230.8	6.5%
Other (poultry, pork)	193.7	221.6	225.9	220.9	235.3	6.5%
TOTAL MEAT	5,552.5	5,286.9	5,406.9	5,797.6	6,541.8	12.8%
DAIRY						
Milk & Powders	7,575.6	7,910.7	7,967.6	11,648.3	8,258.7	-29.1%
Butter	2,400.9	2,294.8	1,909.9	2,699.3	2,219.1	-17.8%
Cheese	1,354.2	1,419.6	1,441.2	1,482.2	1,557.4	5.1%
Casein	705.1	830.1	858.7	1,029.8	1,134.6	10.2%
TOTAL DAIRY	12,035.8	12,455.3	12,177.4	16,859.7	13,169.7	-21.9%
OTHER ANIMAL PRODUCTS						
Hides & Skins	254.3	345.3	341.2	320.4	264.1	-17.6%
Deer Velvet	28.1	31.2	19.3	28.8	34.2	18.6%
Tallow	141.4	139.0	149.0	120.2	109.3	-9.0%
Animal Oils & Fats	24.0	33.7	13.9	9.9	8.7	-12.5%
Crude Animal Materials	316.1	386.7	415.4	366.4	436.3	19.1%
TOTAL OTHER	763.9	935.9	938.8	845.6	852.7	0.8%
LIVESTOCK	225.1	236.5	238.0	207.5	370.0	78.3%
TOTAL PASTORAL	19,294.2	19,690.9	19,439.4	24,443.6	21,739.1	-11.1%
HORTICULTURE & ARABLE						
Fresh Kiwifruit	962.6	1,045.7	934.0	930.5	1,181.9	27.0%
Fresh Apples	363.3	341.6	475.3	536.4	561.8	4.7%
Other Fruit & Nuts	151.0	192.0	131.4	210.6	261.7	24.3%
Vegetables	447.5	405.3	403.8	400.1	394.8	-1.3%
Seeds, Plants, Plant Material	233.7	263.1	290.5	265.2	235.5	-11.2%
Cereals	10.1	7.7	25.3	52.4	15.4	-70.5%
TOTAL HORTICULTURE & ARABLE	2,168.2	2,255.5	2,260.2	2,395.2	2,651.2	10.7%

Value of New Zealand exports (continued)

	2011	2012	2013	2014	2015	% Change
PROCESSED AGRICULTURE						
Tops, Yarns & Sliver	99.3	85.0	49.5	34.0	26.9	-21.0%
Carpets & Rugs	75.0	98.2	107.2	111.5	113.2	1.5%
Other Final Woollen Products	31.9	28.0	20.3	19.0	18.1	-5.0%
Leather/Dressed Skins	282.0	258.3	266.7	304.1	305.0	0.3%
Meat Meal & Animal Feeds	258.9	251.3	277.1	256.0	277.2	8.3%
Processed Fruit & Veg	323.0	353.4	361.7	368.3	341.9	-7.2%
Wine	1,098.9	1,189.6	1,217.4	1,340.0	1,421.5	6.1%
Cereal Products	16.0	18.8	19.6	24.7	26.3	6.3%
TOTAL PROCESSED	2,185.0	2,282.5	2,319.6	2,457.6	2,530.1	2.9%
OTHER AGRICULTURAL EXPORTS	750.4	820.9	944.5	883.3	1,086.4	23.0%
TOTAL AGRICULTURE	24,397.7	25,049.8	24,963.7	30,179.7	28,006.7	-7.2%
FORESTRY						
Sawn Timber & Logs	2,545.1	2,356.5	2,760.1	3,433.6	2,908.8	-15.3%
Other Wood & Wood Products	651.9	701.6	611.9	580.5	561.7	-3.2%
Pulp & Paper Products	1,283.2	1,181.2	1,077.2	1,105.1	1,124.8	1.8%
TOTAL FORESTRY	4,480.2	4,239.3	4,449.2	5,119.2	4,595.3	-10.2%
FISH	1,379.1	1,364.3	1,343.4	1,324.7	1,405.9	6.1%
TOTAL PRIMARY EXPORTS	30,257.1	30,653.4	30,756.4	36,623.6	34,008.0	-7.1%
OTHER MERCHANDISE EXPORTS						
Aluminium	1,257.2	1,140.4	994.9	945.7	1,069.0	13.0%
Mineral Fuels	2,175.0	2,380.7	2,000.9	1,615.6	1,227.3	-24.0%
Machinery & Equipment	2,288.9	2,506.7	2,208.6	2,091.6	2,161.0	3.3%
Other Exports	8,243.5	8,211.8	8,152.3	8,083.1	7,803.0	-3.5%
TOTAL MERCHANDISE EXPORTS	44,221.7	44,892.9	44,113.0	49,359.7	46,268.4	-6.3%
PASTORAL % OF EXPORTS	43.6%	43.9%	44.1%	49.5%	47.0%	
AGRICULTURE % OF EXPORTS	55.2%	55.8%	56.6%	61.1%	60.5%	
PRIMARY % OF EXPORTS	68.4%	68.3%	69.7%	74.2%	73.5%	

Source: Beef + Lamb New Zealand Economic Service, Statistics New Zealand

B+LNZ Board of Directors

James Parsons *Chairman and Farmer Representative, Northern North Island*
P: 09 439 7749 M: 021 206 3208
james.parsons@beeflambnz.com

Kirsten Bryant *Farmer Representative, Western North Island*
P: 06 342 7755 M: 027 275 1690
oneida.hills@xtra.co.nz

George Tatham *Farmer Representative, Eastern North Island*
P: 06 372 3609 M: 027 244 4900
georgetatham@gmail.com

Phil Smith *Farmer Representative, Northern South Island*
P: 03 315 8677 M: 027 222 7927
balmoral@amuri.net

Bill Wright *Farmer Representative, Central South Island*
P: 03 614 3751 M: 027 244 7923
w.s.wright@xtra.co.nz

Andrew Morrison *Farmer Representative, Southern South Island*
P: 03 207 1856 M: 027 664 4620
beak.lisa@gmail.com

Sam Lewis
Processor-Exporter Appointee
P: 07 870 2425 M: 021 815 658
samuel.lewis@xtra.co.nz

Mark Clarkson
Processor-Exporter Appointee
P: 03 358 2200 M: 027 432 8896
mark.clarkson@anzcofoods.com

Economic Service Managers

Dot Larsen
Northern North Island
P: 07 839 4260 M: 027 555 9127
dot.larsen@beeflambnz.com

Sam Stewart
Northern North Island
P: 07 839 4261 M: 027 454 8878
sam.stewart@beeflambnz.com

Stephen Lys
Eastern North Island
P: 06 870 3496 M: 027 248 3521
stephen.lys@beeflambnz.com

Tim Hembrow
Western North Island
P: 06 323 0508 M: 027 333 6289
tim.hembrow@beeflambnz.com

Michael Flett
Western North Island
P: 06 323 3168 M: 027 839 6365
michael.flett@beeflambnz.com

Annette Crawshaw
Northern South Island
P: 03 357 3095 M: 027 555 0123
annette.crawshaw@beeflambnz.com

Hannah Gibson
Central South Island
P: 03 357 0696 M: 027 431 2583
hannah.gibson@beeflambnz.com

Jenny McGimpsey
Southern South Island
P: 03 204 0859 M: 027 458 8067
jenny.mcgimpsey@beeflambnz.com

B+LNZ Extension Managers

Paul McCauley

National Extension Manager

P: 03 448 9176 M: 027 522 3499

paul.mccauley@beeflambnz.com

Alison Whiteford

Northern North Island

P: 09 438 0672 M: 027 489 7343

alison.whiteford@beeflambnz.com

Andrew Jolly

Mid Northern North Island

P: 07 839 0286 M: 027 556 8836

andrew.jolly@beeflambnz.com

Kylie Brewer

Environment Extension Manager

P: 06 323 5633 M: 027 886 2835

kylie.brewer@beeflambnz.com

Mark Harris

Eastern North Island

P: 06 870 3495 M: 027 577 9991

mark.harris@beeflambnz.com

Lauren Cameron

Eastern North Island

P: 06 370 2389 M: 027 431 7626

lauren.cameron@beeflambnz.com

Jason Griffin

Western North Island

P: 06 324 0390 M: 027 431 0225

jason.griffin@beeflambnz.com

Turi McFarlane

Environment Extension Manager

P: 03 357 0692 M: 027 836 7658

turi.mcfarlane@beeflambnz.com

Sarah O'Connell

Northern South Island

P: 03 357 0693 M: 027 496 8496

sarah.oconnell@beeflambnz.com

Aaron Meikle

Central South Island

P: 03 433 1392 M: 027 498 9703

aaron.meikle@beeflambnz.com

Olivia Ross

Southern South Island

P: 03 208 4144 M: 027 801 7868

olivia.ross@beeflambnz.com

B+LNZ Economic Service

Andrew Burt

P: 04 474 0842 M: 027 652 9543

andrew.burt@beeflambnz.com

Rob Davison

P: 04 471 6034

rob.davison@beeflambnz.com

Loma Finch

P: 04 474 0830

loma.finch@beeflambnz.com

Adrienne Egger

P: 04 494 9508

adrienne.egger@beeflambnz.com

Rob Gibson

P: 04 471 6037

rob.gibson@beeflambnz.com

Brian Speirs

P: 04 474 0846

brian.speirs@beeflambnz.com

Carly Sluys

P: 03 357 0695 M: 027 572 7614

carly.sluys@beeflambnz.com



Beef + Lamb New Zealand
Economic Service
PO Box 121, Wellington 6140
E-mail: econ@beeflambnz.com
Phone: +64 (4) 473 9150
Website: www.beeflambnz.com